

Hartland Ave west of West Saanich Rd

February 25, 2020 To February 27, 2020



The data presented here is for information purposes only and should not be considered authoritative for construction, geotechnical, engineering, navigational, legal, or other site-specific uses. The information shared is owned by the Transportation Division of the Engineering Department at the District of Saanich. Accuracy is not guaranteed.

Start Date: 24-Feb-20
 Start Time: 0:05
 Station ID: M0021-01

Location 1: Hartland Ave west of West Saanich Rd

Note:

DATE:	February 24, 2020		February 25, 2020		February 26, 2020		February 27, 2020		February 28, 2020		WK AVG		WK AVG	HOURLY
	MON		TUE		WED		THURS		FRI		EB	WB	CH 1+2	%
Time:	EB	WB	EB	WB	EB	WB	EB	WB	EB	WB	EB	WB		
12-1 AM			2	3	1	3	0	2			1	3	4	0.2%
1-2 AM			0	0	0	0	1	0			0	0	0	0.0%
2-3 AM			0	0	0	0	0	0			0	0	0	0.0%
3-4 AM			0	0	0	1	0	0			0	0	0	0.0%
4-5 AM			1	0	3	0	2	0			2	0	2	0.1%
5-6 AM			2	3	6	5	5	4			4	4	8	0.6%
6-7 AM			20	17	17	13	15	14			17	15	32	2.1%
7-8 AM			30	31	36	20	35	17			34	23	56	3.8%
8-9 AM			39	52	35	55	31	50			35	52	87	5.8%
9-10 AM			60	58	66	86	44	61			57	68	125	8.4%
10-11 AM			72	78	81	85	74	60			76	74	150	10.0%
11-12 PM			85	63	107	85	73	74			88	74	162	10.9%
12-1 PM			69	78	74	79	78	78			74	78	152	10.2%
1-2 PM			79	87	82	67	78	72			80	75	155	10.4%
2-3 PM			72	62	60	67	68	78			67	69	136	9.1%
3-4 PM			59	61	65	77	68	61			64	66	130	8.7%
4-5 PM			51	52	51	68	51	72			51	64	115	7.7%
5-6 PM			38	32	56	41	48	32			47	35	82	5.5%
6-7 PM			22	20	20	16	20	17			21	18	38	2.6%
7-8 PM			9	8	13	15	13	9			12	11	22	1.5%
8-9 PM			7	8	16	5	12	10			12	8	19	1.3%
9-10 PM			8	8	2	4	1	3			4	5	9	0.6%
10-11 PM			1	6	3	4	1	5			2	5	7	0.4%
11-12 AM			1	1	1	4	1	0			1	2	3	0.2%
LANES			727	728	795	800	719	719			747	749	1496	100.0%
TOTAL			1455		1595		1438				1500			
	MON		TUE		WED		THURS		FRI		WK AVG			

PEAK HOUR					TOTAL VEHICALS-PEAK PERIODS		2 HOUR PEAK INTERVALS				
MAX. 7 - 9 am PEAK HOUR	87	⇒	5.8%	between 8-9 AM	655	⇒	6 HR TOTAL	2 HR AM (7 - 9 AM)			
MAX. 7 - 11 am PEAK HOUR	150	⇒	10.0%	between 10-11 AM	341	⇒	4 HR TOTAL	VEH / HR	VEH / 2HR	2 HR %	
MAX. 11 am - 1 pm PEAK HOUR	162	⇒	10.9%	between 11-12 PM				7-8 AM	56	144	9.6%
MAX. 11 am - 3 pm PEAK HOUR	162	⇒	10.9%	between 11-12 PM				8-9 AM	87		
MAX. 4 - 6 pm PEAK HOUR	115	⇒	7.7%	between 4-5 PM			24 HOUR FACTORS	2 HR NOON (11 - 1 PM)			
MAX. 3 - 6 pm PEAK HOUR	130	⇒	8.7%	between 3-4 PM	2.28	⇒	6-24 HR FACT.	VEH / HR	VEH / 2HR	2 HR %	
					4.39	⇒	4-24 HR FACT.	11-12 PM	162	314	21.0%
								12-1 PM	152		
								2 HR PM (4 - 6 PM)			
								VEH / HR	VEH / 2HR	2 HR %	
								4-5 PM	115	197	13.2%
								5-6 PM	82		

Hartland Ave west of West Saanich Rd

Westbound

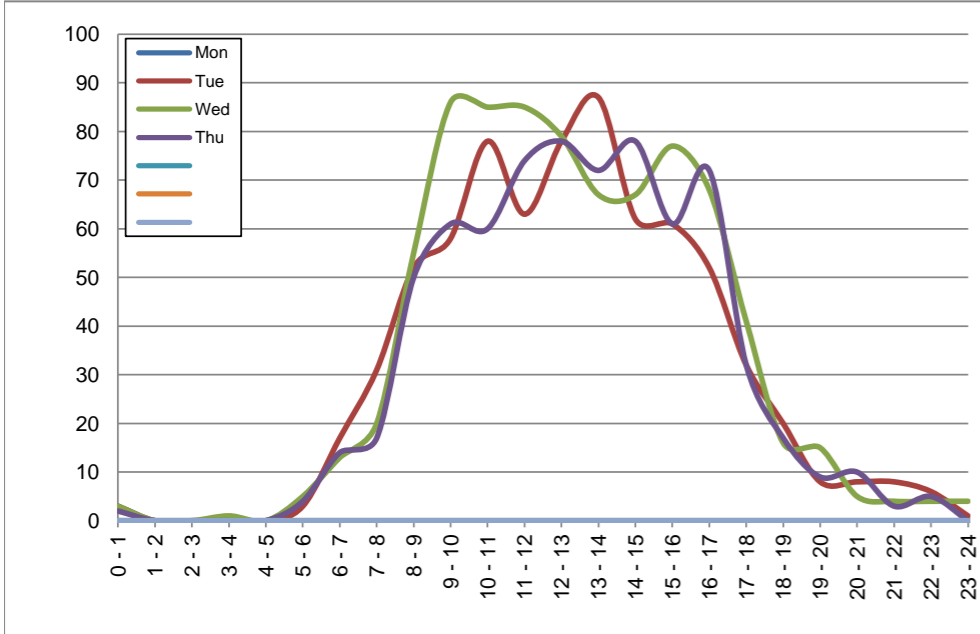
February 24, 2020 to February 27, 2020

Hourly Volumes

Time Period	Mon	Tue	Wed	Thu			
	Feb 24	Feb 25	Feb 26	Feb 27			
0 - 1		3	3	2			
1 - 2		0	0	0			
2 - 3		0	0	0			
3 - 4		0	1	0			
4 - 5		0	0	0			
5 - 6		3	5	4			
6 - 7		17	13	14			
7 - 8		31	20	17			
8 - 9		52	55	50			
9 - 10		58	86	61			
10 - 11		78	85	60			
11 - 12		63	85	74			
12 - 13		78	79	78			
13 - 14		87	67	72			
14 - 15		62	67	78			
15 - 16		61	77	61			
16 - 17		52	68	72			
17 - 18		32	41	32			
18 - 19		20	16	17			
19 - 20		8	15	9			
20 - 21		8	5	10			
21 - 22		8	4	3			
22 - 23		6	4	5			
23 - 24		1	4	0			
Day Total		728	800	719			

15-Minute Volumes

Time Start	Mon	Tue	Wed	Thu				Time Start	Mon	Tue	Wed	Thu			
	Feb 24	Feb 25	Feb 26	Feb 27					Feb 24	Feb 25	Feb 26	Feb 27			
0:00		2	0	0				12:00		20	14	24			
0:15		0	1	1				12:15		21	16	23			
0:30		1	0	0				12:30		20	24	10			
0:45		0	2	1				12:45		17	25	21			
1:00		0	0	0				13:00		18	8	21			
1:15		0	0	0				13:15		24	23	16			
1:30		0	0	0				13:30		27	21	27			
1:45		0	0	0				13:45		18	15	8			
2:00		0	0	0				14:00		10	18	21			
2:15		0	0	0				14:15		22	15	19			
2:30		0	0	0				14:30		18	16	21			
2:45		0	0	0				14:45		12	18	17			
3:00		0	0	0				15:00		18	14	13			
3:15		0	0	0				15:15		11	13	18			
3:30		0	0	0				15:30		12	20	18			
3:45		0	1	0				15:45		20	30	12			
4:00		0	0	0				16:00		16	20	17			
4:15		0	0	0				16:15		12	19	26			
4:30		0	0	0				16:30		11	14	15			
4:45		0	0	0				16:45		13	15	14			
5:00		0	0	0				17:00		7	9	9			
5:15		0	0	0				17:15		11	11	6			
5:30		1	2	2				17:30		5	10	8			
5:45		2	3	2				17:45		9	11	9			
6:00		3	2	2				18:00		6	5	6			
6:15		0	0	2				18:15		4	5	5			
6:30		6	7	4				18:30		4	4	5			
6:45		8	4	6				18:45		6	2	1			
7:00		4	8	6				19:00		5	4	1			
7:15		5	2	5				19:15		0	5	3			
7:30		7	6	5				19:30		2	4	3			
7:45		15	4	1				19:45		1	2	2			
8:00		7	7	8				20:00		0	1	3			
8:15		12	8	10				20:15		0	1	3			
8:30		13	17	15				20:30		7	1	4			
8:45		20	23	17				20:45		1	2	0			
9:00		12	24	12				21:00		3	1	0			
9:15		13	19	10				21:15		2	1	0			
9:30		12	21	17				21:30		2	1	3			
9:45		21	22	22				21:45		1	1	0			
10:00		19	12	20				22:00		1	1	0			
10:15		16	24	13				22:15		3	1	1			
10:30		16	27	18				22:30		0	1	2			
10:45		27	22	9				22:45		2	1	2			
11:00		18	30	15				23:00		0	0	0			
11:15		19	17	15				23:15		1	2	0			
11:30		7	16	23				23:30		0	1	0			
11:45		19	22	21				23:45		0	1	0			



Site notes:

Hartland Ave west of West Saanich Rd

Eastbound

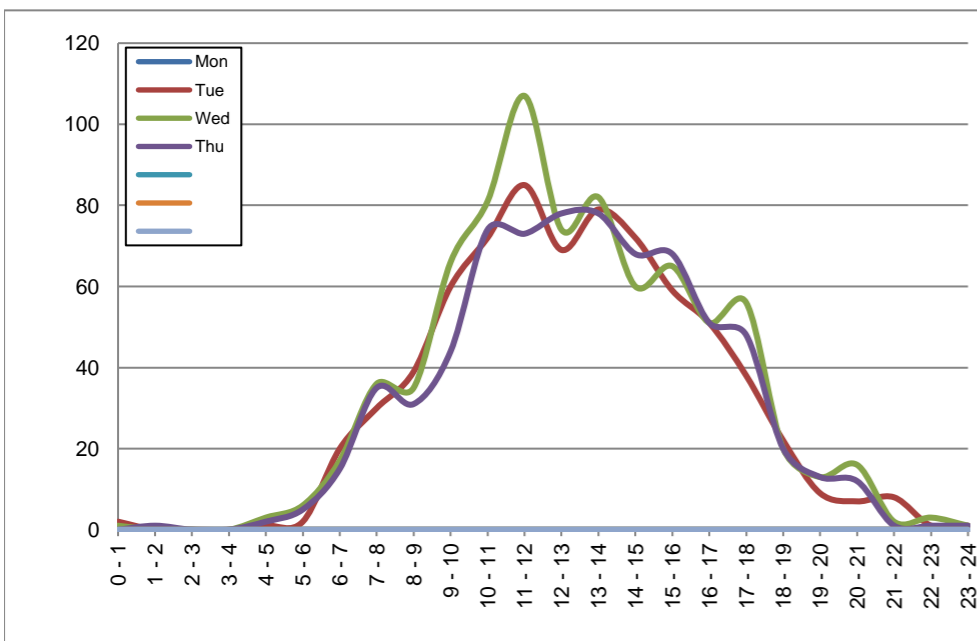
February 24, 2020 to February 27, 2020

Hourly Volumes

Time Period	Mon	Tue	Wed	Thu			
	Feb 24	Feb 25	Feb 26	Feb 27			
0 - 1		2	1	0			
1 - 2		0	0	1			
2 - 3		0	0	0			
3 - 4		0	0	0			
4 - 5		1	3	2			
5 - 6		2	6	5			
6 - 7		20	17	15			
7 - 8		30	36	35			
8 - 9		39	35	31			
9 - 10		60	66	44			
10 - 11		72	81	74			
11 - 12		85	107	73			
12 - 13		69	74	78			
13 - 14		79	82	78			
14 - 15		72	60	68			
15 - 16		59	65	68			
16 - 17		51	51	51			
17 - 18		38	56	48			
18 - 19		22	20	20			
19 - 20		9	13	13			
20 - 21		7	16	12			
21 - 22		8	2	1			
22 - 23		1	3	1			
23 - 24		1	1	1			
Day Total		727	795	719			

15-Minute Volumes

Time Start	Mon	Tue	Wed	Thu				Time Start	Mon	Tue	Wed	Thu			
	Feb 24	Feb 25	Feb 26	Feb 27					Feb 24	Feb 25	Feb 26	Feb 27			
0:00		0	0	0				12:00		13	16	19			
0:15		1	0	0				12:15		20	13	23			
0:30		0	1	0				12:30		20	26	25			
0:45		1	0	0				12:45		16	19	11			
1:00		0	0	1				13:00		18	20	13			
1:15		0	0	0				13:15		15	20	23			
1:30		0	0	0				13:30		19	18	16			
1:45		0	0	0				13:45		27	24	26			
2:00		0	0	0				14:00		14	16	17			
2:15		0	0	0				14:15		19	16	20			
2:30		0	0	0				14:30		21	19	17			
2:45		0	0	0				14:45		18	9	14			
3:00		0	0	0				15:00		15	18	21			
3:15		0	0	0				15:15		16	14	16			
3:30		0	0	0				15:30		16	13	15			
3:45		0	0	0				15:45		12	20	16			
4:00		1	2	2				16:00		13	15	11			
4:15		0	0	0				16:15		18	11	12			
4:30		0	1	0				16:30		13	17	14			
4:45		0	0	0				16:45		7	8	14			
5:00		0	1	0				17:00		8	17	11			
5:15		1	3	1				17:15		19	14	15			
5:30		1	0	1				17:30		5	16	15			
5:45		0	2	3				17:45		6	9	7			
6:00		8	4	5				18:00		10	8	7			
6:15		4	4	2				18:15		3	3	6			
6:30		5	5	5				18:30		3	5	5			
6:45		3	4	3				18:45		6	4	2			
7:00		5	5	5				19:00		2	3	5			
7:15		10	14	14				19:15		2	3	1			
7:30		7	10	13				19:30		3	6	5			
7:45		8	7	3				19:45		2	1	2			
8:00		8	10	7				20:00		0	3	4			
8:15		17	9	11				20:15		4	6	4			
8:30		10	6	10				20:30		2	2	4			
8:45		4	10	3				20:45		1	5	0			
9:00		12	5	1				21:00		2	0	1			
9:15		20	22	18				21:15		5	1	0			
9:30		18	19	14				21:30		0	1	0			
9:45		10	20	11				21:45		1	0	0			
10:00		15	20	21				22:00		0	0	0			
10:15		22	18	19				22:15		0	3	0			
10:30		21	20	21				22:30		0	0	0			
10:45		14	23	13				22:45		1	0	1			
11:00		25	24	17				23:00		0	0	0			
11:15		16	38	16				23:15		0	0	0			
11:30		23	26	13				23:30		0	0	0			
11:45		21	19	27				23:45		1	1	1			



Site notes:

Vehicle Speed Summary

Saanich Engineering Department

Count Id: [M0021-01](#)

Filename: [Hartland Ave west of West Saanich Rd-Feb-2020.xlsm](#)

Location: Hartland Ave west of West Saanich Rd

Note:

Direction: **East-West**

Dates: **February 25, 2020 To February 27, 2020**

Filtered data

AVG. SPEED	38 mph	61 km/h
50 % SPEED	38 mph	62 km/h
85 % SPEED	44 mph	71 km/h
95 % SPEED	48 mph	77 km/h

Location Map



Hartland Ave west of West Saanich Rd

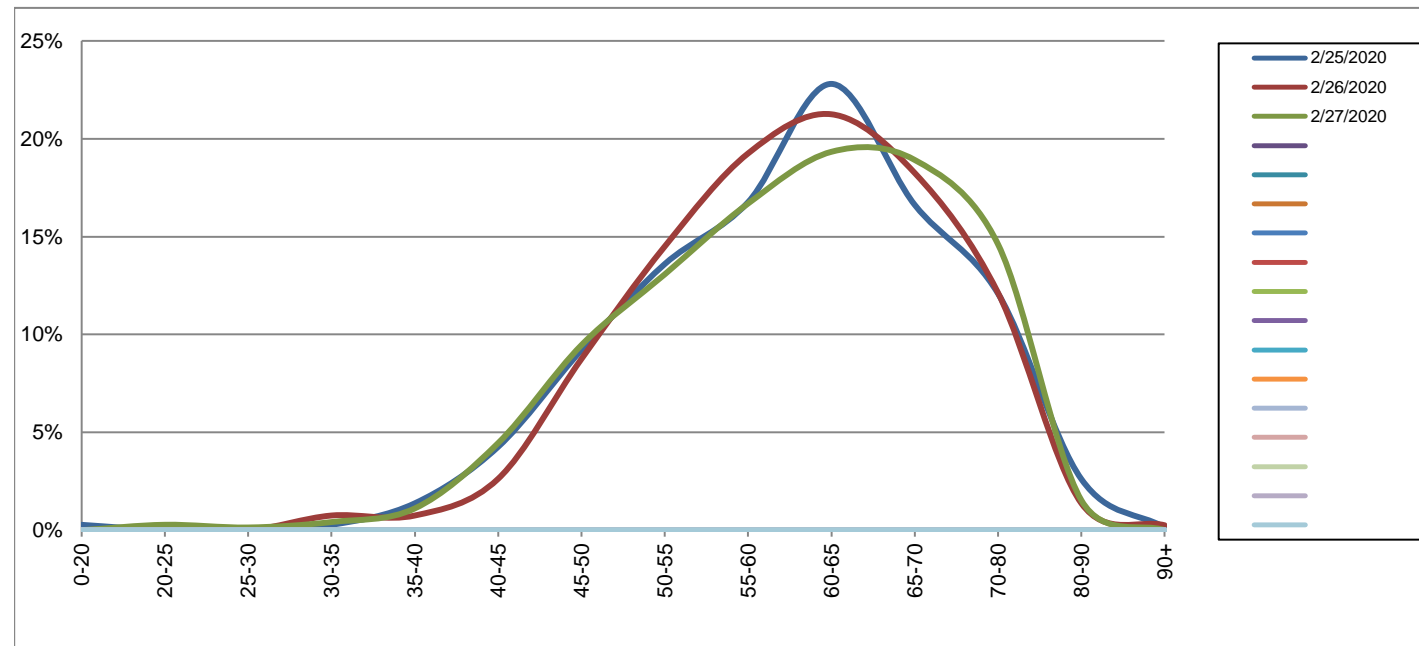
Westbound

February 25, 2020 to February 27, 2020

Daily Speed Bin Percentages															Daily Speed Bin Volumes														Total	Avg.
Bin #	1	2	3	4	5	6	7	8	9	10	11	12	13	14	1	2	3	4	5	6	7	8	9	10	11	12	13	14	Volume	Speed
Bin Speeds	0-20	20-25	25-30	30-35	35-40	40-45	45-50	50-55	55-60	60-65	65-70	70-80	80-90	90+	0-20	20-25	25-30	30-35	35-40	40-45	45-50	50-55	55-60	60-65	65-70	70-80	80-90	90+		
2/25/2020	0.3%	0.0%	0.0%	0.3%	1.4%	4.3%	9.2%	13.6%	16.8%	22.8%	16.6%	12.1%	2.6%	0.1%	2	0	0	2	10	31	67	99	122	166	121	88	19	1	728	60
2/26/2020	0.0%	0.1%	0.0%	0.8%	0.8%	2.6%	8.8%	14.5%	19.3%	21.3%	18.3%	12.1%	1.4%	0.3%	0	1	0	6	6	21	70	116	154	170	146	97	11	2	800	61
2/27/2020	0.0%	0.3%	0.1%	0.4%	1.1%	4.5%	9.5%	13.1%	16.7%	19.3%	18.9%	14.6%	1.5%	0.0%	0	2	1	3	8	32	68	94	120	139	136	105	11	0	719	61
Total	0.1%	0.1%	0.0%	0.5%	1.1%	3.7%	9.1%	13.8%	17.6%	21.1%	17.9%	12.9%	1.8%	0.1%	2	3	1	11	24	84	205	309	396	475	403	290	41	3	2247	61

Speed Data Summary

Bin #	1	2	3	4	5	6	7	8	9	10	11	12	13	14	Total
Bin Speeds	0-20	20-25	25-30	30-35	35-40	40-45	45-50	50-55	55-60	60-65	65-70	70-80	80-90	90+	
Survey Total	2	3	1	11	24	84	205	309	396	475	403	290	41	3	2247
% Total	0.1%	0.1%	0.0%	0.5%	1.1%	3.7%	9.1%	13.8%	17.6%	21.1%	17.9%	12.9%	1.8%	0.1%	100%
Accumulated %	0.1%	0.2%	0.3%	0.8%	1.8%	5.6%	14.7%	28.4%	46.1%	67.2%	85.1%	98.0%	99.9%	100%	
Inverse Accum. %	99.9%	99.8%	99.7%	99.2%	98.2%	94.4%	85.3%	71.6%	53.9%	32.8%	14.9%	2.0%	0.1%	0.0%	
Average Speed	61 KM/H														



Site notes:

Hartland Ave west of West Saanich Rd

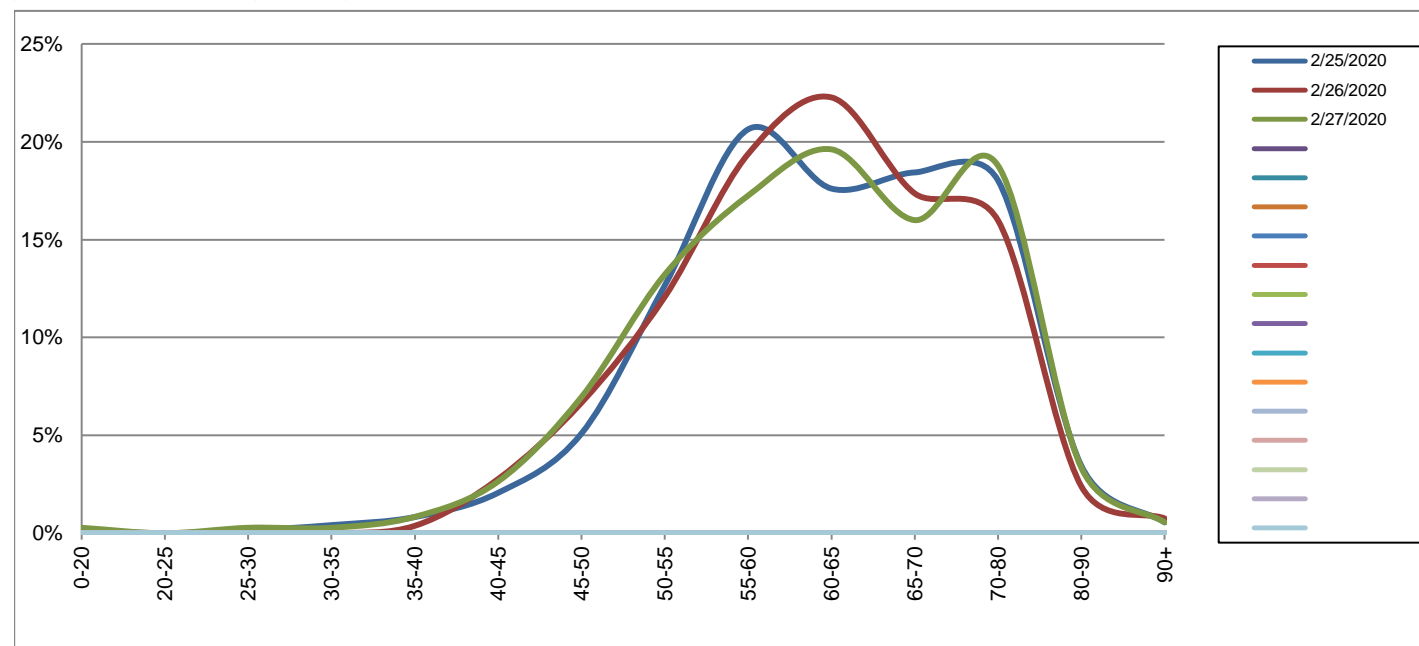
Eastbound

February 25, 2020 to February 27, 2020

Daily Speed Bin Percentages														Daily Speed Bin Volumes														Total	Avg.	
Bin #	1	2	3	4	5	6	7	8	9	10	11	12	13	14	1	2	3	4	5	6	7	8	9	10	11	12	13	14	Volume	Speed
Bin Speeds	0-20	20-25	25-30	30-35	35-40	40-45	45-50	50-55	55-60	60-65	65-70	70-80	80-90	90+	0-20	20-25	25-30	30-35	35-40	40-45	45-50	50-55	55-60	60-65	65-70	70-80	80-90	90+		
2/25/2020	0.1%	0.0%	0.1%	0.4%	0.8%	2.1%	5.1%	12.7%	20.6%	17.6%	18.4%	18.0%	3.4%	0.6%	1	0	1	3	6	15	37	92	150	128	134	131	25	4	727	63
2/26/2020	0.0%	0.0%	0.0%	0.0%	0.4%	2.8%	6.7%	12.1%	19.4%	22.3%	17.4%	16.0%	2.4%	0.8%	0	0	0	0	3	22	53	96	154	177	138	127	19	6	795	62
2/27/2020	0.3%	0.0%	0.3%	0.3%	0.8%	2.6%	7.0%	13.2%	17.2%	19.6%	16.0%	18.8%	3.3%	0.6%	2	0	2	2	6	19	50	95	124	141	115	135	24	4	719	62
Total	0.1%	0.0%	0.1%	0.2%	0.7%	2.5%	6.2%	12.6%	19.1%	19.9%	17.3%	17.5%	3.0%	0.6%	3	0	3	5	15	56	140	283	428	446	387	393	68	14	2241	62

Speed Data Summary

Bin #	1	2	3	4	5	6	7	8	9	10	11	12	13	14	Total
Bin Speeds	0-20	20-25	25-30	30-35	35-40	40-45	45-50	50-55	55-60	60-65	65-70	70-80	80-90	90+	
Survey Total	3	0	3	5	15	56	140	283	428	446	387	393	68	14	2241
% Total	0.1%	0.0%	0.1%	0.2%	0.7%	2.5%	6.2%	12.6%	19.1%	19.9%	17.3%	17.5%	3.0%	0.6%	100%
Accumulated %	0.1%	0.1%	0.3%	0.5%	1.2%	3.7%	9.9%	22.5%	41.6%	61.5%	78.8%	96.3%	99.4%	100%	
Inverse Accum. %	99.9%	99.9%	99.7%	99.5%	98.8%	96.3%	90.1%	77.5%	58.4%	38.5%	21.2%	3.7%	0.6%	0.0%	
Average Speed	62 KM/H														



Site notes:

Hartland Ave west of West Saanich Rd

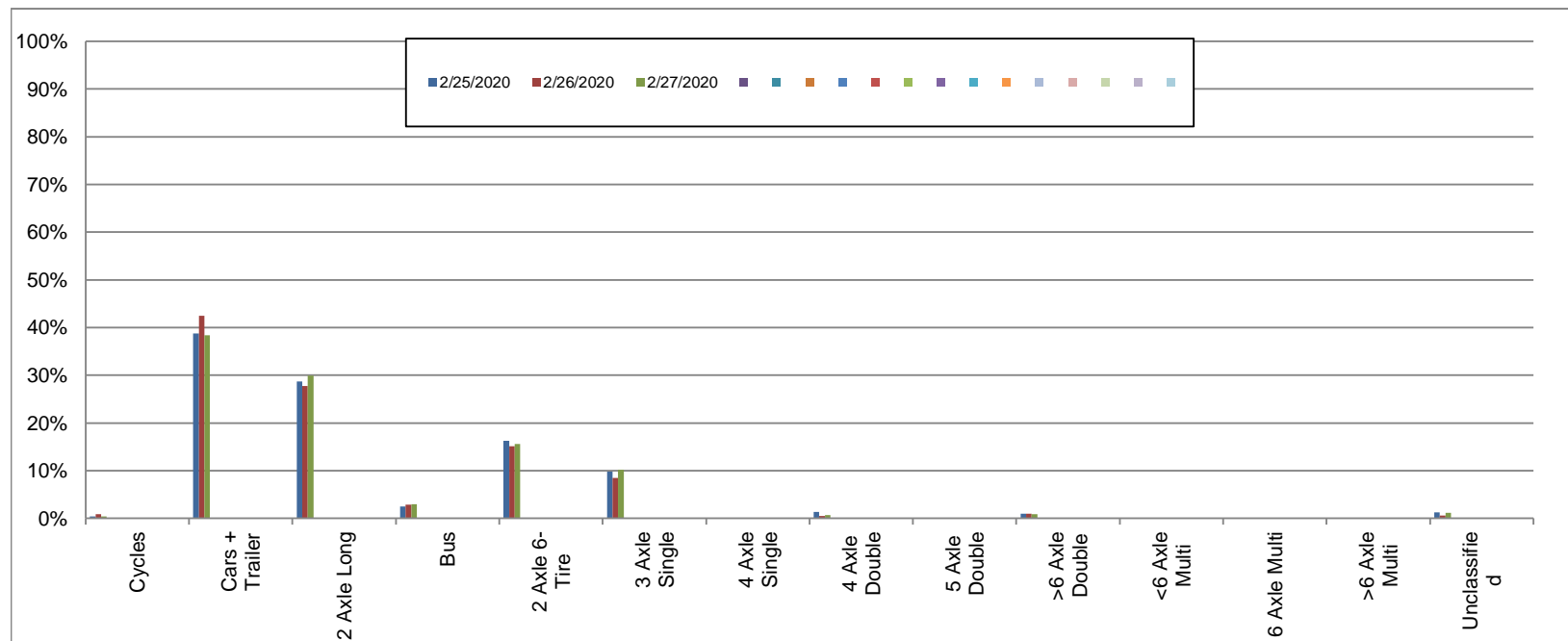
Westbound

February 25, 2020 to February 27, 2020

Daily Class Bin Percentages															Daily Class Bin Volumes														
Bin #	1	2	3	4	5	6	7	8	9	10	11	12	13	14	1	2	3	4	5	6	7	8	9	10	11	12	13	14	Total Volume
Bin Class	Cycles	Cars + Trailer	2 Axle Long	Bus	2 Axle 6-Tire	3 Axle Single	4 Axle Single	4 Axle Double	5 Axle Double	>6 Axle Double	<6 Axle Multi	6 Axle Multi	>6 Axle Multi	Unclassified	Cycles	Cars + Trailer	2 Axle Long	Bus	2 Axle 6-Tire	3 Axle Single	4 Axle Single	4 Axle Double	5 Axle Double	>6 Axle Double	<6 Axle Multi	6 Axle Multi	>6 Axle Multi	Unclassified	
2/25/2020	0.4%	38.7%	28.7%	2.5%	16.2%	9.8%	0.0%	1.4%	0.1%	1.0%	0.0%	0.0%	0.0%	1.2%	3	282	209	18	118	71	0	10	1	7	0	0	0	9	728
2/26/2020	0.9%	42.5%	27.8%	2.9%	15.1%	8.5%	0.1%	0.5%	0.1%	1.0%	0.0%	0.0%	0.0%	0.6%	7	340	222	23	121	68	1	4	1	8	0	0	0	5	800
2/27/2020	0.4%	38.4%	29.9%	2.9%	15.6%	10.2%	0.0%	0.7%	0.0%	0.8%	0.0%	0.0%	0.0%	1.1%	3	276	215	21	112	73	0	5	0	6	0	0	0	8	719
Total	0.6%	40.0%	28.7%	2.8%	15.6%	9.4%	0.0%	0.8%	0.1%	0.9%	0.0%	0.0%	0.0%	1.0%	13	898	646	62	351	212	1	19	2	21	0	0	0	22	2247

Class Data Summary

Bin #	1	2	3	4	5	6	7	8	9	10	11	12	13	14	Total Volume
Bin Class	Cycles	Cars + Trailer	2 Axle Long	Bus	2 Axle 6-Tire	3 Axle Single	4 Axle Single	4 Axle Double	5 Axle Double	>6 Axle Double	<6 Axle Multi	6 Axle Multi	>6 Axle Multi	Unclassified	Total Volume
Survey Total	13	898	646	62	351	212	1	19	2	21	0	0	0	22	2247
% Total	0.6%	40.0%	28.7%	2.8%	15.6%	9.4%	0.0%	0.8%	0.1%	0.9%	0.0%	0.0%	0.0%	1.0%	100%
Accumulated %	0.6%	40.5%	69.3%	72.1%	87.7%	97.1%	97.2%	98.0%	98.1%	99.0%	99.0%	99.0%	99.0%	100.0%	
Inv. Accum. %	99.4%	59.5%	30.7%	27.9%	12.3%	2.9%	2.8%	2.0%	1.9%	1.0%	1.0%	1.0%	1.0%	0.0%	



Classification Descriptions

Bin #	Bin Description
1	Motorcycles
2	Passenger cars, including those with recreational trailers
3	2-axle pick-ups, vans, and RVs, including those with recreational trailers
4	Buses
5	2-axle, 6-tire single units
6	3-axle single units
7	4-axle single units
8	3-axle or 4-axle double unit
9	5-axle double unit
10	6-, 7-, or 8-axle double unit
11	5-axle multiple unit
12	6-axle multiple unit
13	7-or-more-axle multiple unit
14	Vehicles that could not be classified

Site notes:

Hartland Ave west of West Saanich Rd

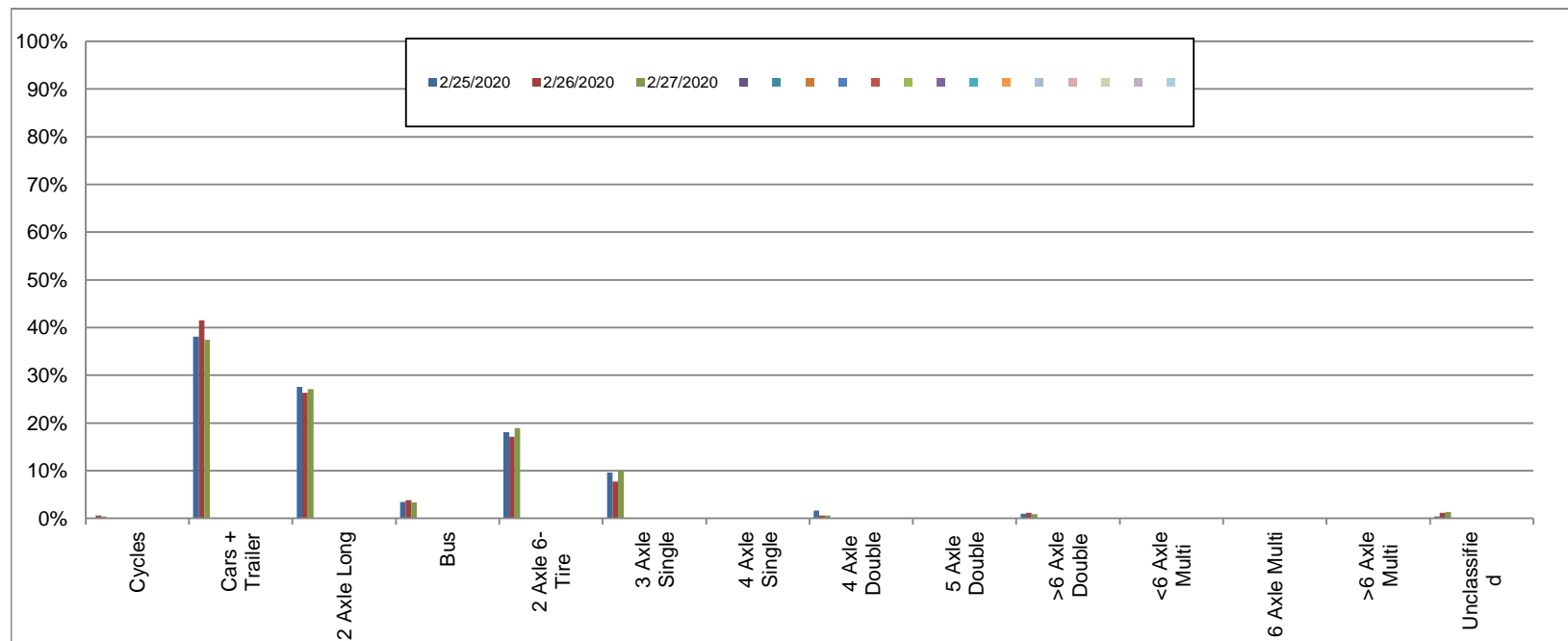
Eastbound

February 25, 2020 to February 27, 2020

Daily Class Bin Percentages															Daily Class Bin Volumes														
Bin #	1	2	3	4	5	6	7	8	9	10	11	12	13	14	1	2	3	4	5	6	7	8	9	10	11	12	13	14	Total Volume
Bin Class	Cycles	Cars + Trailer	2 Axle Long	Bus	2 Axle 6-Tire	3 Axle Single	4 Axle Single	4 Axle Double	5 Axle Double	>6 Axle Double	<6 Axle Multi	6 Axle Multi	>6 Axle Multi	Unclassified	Cycles	Cars + Trailer	2 Axle Long	Bus	2 Axle 6-Tire	3 Axle Single	4 Axle Single	4 Axle Double	5 Axle Double	>6 Axle Double	<6 Axle Multi	6 Axle Multi	>6 Axle Multi	Unclassified	
2/25/2020	0.1%	38.1%	27.5%	3.4%	18.0%	9.6%	0.0%	1.7%	0.1%	1.0%	0.0%	0.0%	0.0%	0.4%	1	277	200	25	131	70	0	12	1	7	0	0	0	3	727
2/26/2020	0.6%	41.5%	26.3%	3.8%	17.1%	7.7%	0.0%	0.6%	0.1%	1.1%	0.0%	0.0%	0.0%	1.1%	5	330	209	30	136	61	0	5	1	9	0	0	0	9	795
2/27/2020	0.4%	37.4%	27.1%	3.3%	18.9%	10.0%	0.0%	0.6%	0.0%	0.8%	0.0%	0.0%	0.0%	1.4%	3	269	195	24	136	72	0	4	0	6	0	0	0	10	719
Total	0.4%	39.1%	27.0%	3.5%	18.0%	9.1%	0.0%	0.9%	0.1%	1.0%	0.0%	0.0%	0.0%	1.0%	9	876	604	79	403	203	0	21	2	22	0	0	0	22	2241

Class Data Summary

Bin #	1	2	3	4	5	6	7	8	9	10	11	12	13	14	Total Volume
Bin Class	Cycles	Cars + Trailer	2 Axle Long	Bus	2 Axle 6-Tire	3 Axle Single	4 Axle Single	4 Axle Double	5 Axle Double	>6 Axle Double	<6 Axle Multi	6 Axle Multi	>6 Axle Multi	Unclassified	Total Volume
Survey Total	9	876	604	79	403	203	0	21	2	22	0	0	0	22	2241
% Total	0.4%	39.1%	27.0%	3.5%	18.0%	9.1%	0.0%	0.9%	0.1%	1.0%	0.0%	0.0%	0.0%	1.0%	100%
Accumulated %	0.4%	39.5%	66.4%	70.0%	88.0%	97.0%	97.0%	97.9%	98.0%	99.0%	99.0%	99.0%	99.0%	100.0%	
Inv. Accum. %	99.6%	60.5%	33.6%	30.0%	12.0%	3.0%	3.0%	2.1%	2.0%	1.0%	1.0%	1.0%	1.0%	0.0%	



Classification Descriptions

Bin #	Bin Description
1	Motorcycles
2	Passenger cars, including those with recreational trailers
3	2-axle pick-ups, vans, and RVs, including those with recreational trailers
4	Buses
5	2-axle, 6-tire single units
6	3-axle single units
7	4-axle single units
8	3-axle or 4-axle double unit
9	5-axle double unit
10	6-, 7-, or 8-axle double unit
11	5-axle multiple unit
12	6-axle multiple unit
13	7-or-more-axle multiple unit
14	Vehicles that could not be classified

Site notes: